



SGA-4601 SNI Gateway Appliance

SNI communications via secure IP transport

The SNI Gateway Appliance SGA-4601 is a unique, cost-effective replacement for the traditional 3745/46 Communications Controller. The SGA-4601 provides host-to-host SNA Network Interface (SNI) connections and does not require NCP/SSP software licenses, Enterprise Extender/APPN nor a leased line.



Key Features

- Functional 3745/46 SNI/PU4 replacement
- Support for up to 16 LPARS (CU Images) and 256 sub-channel addresses
- ESCON support
- No NCP/SSP, APPN, Enterprise Extender or leased line required
- Support for SNA PU4/PU5 data streams embedded within an IP encrypted non-SDLC transport
- Browser based on-line configuration
- Automatic Recovery boots into normal operation at power on or power restore

SNI/PU4 Support

The Visara SGA-4601 uniquely provides full SNI/PU4 Cross Domain computing via secure IP without the need for expensive NCP software suites or Enterprise Extender/APPN implementation. Alternative SNI solutions require implementation of APPN and Enterprise Extender which cannot be easily justified in smaller shops. The SNI capabilities of the SGA-4601 allow the MIS department to move to a state-of-the-art hardware and software platform that offers an ROI of just 12 to 18 months on average without having to acquire APPN skill sets. Now MIS departments can lose the ongoing drag on resources of NCP costs and plan for the future knowing that while needed, SNI is still available.

Robust host connectivity

The SGA-4601 connects to any IBM Mainframe processor or compatible processor via an ESCON channel, either directly to a CHPID or through a director.

LAN/WAN Inter-connectivity

The SGA-4601 includes two redundant 10/100/1000 Mbps Ethernet interfaces. The SGA-4601 is configured to communicate using SSL encrypted TCP/IP protocol to a compatible platform (SGA-4601 or FEP-4600) at the remote location via a secure host-to-host data exchange over a variety of public or private networks. Multiple SGA-4601s can be interconnected to provide connectivity between multiple sites. Although the SGA-4601 platforms are interconnected, they remain independent functional units allowing different organizations to communicate without compromising their unique security.

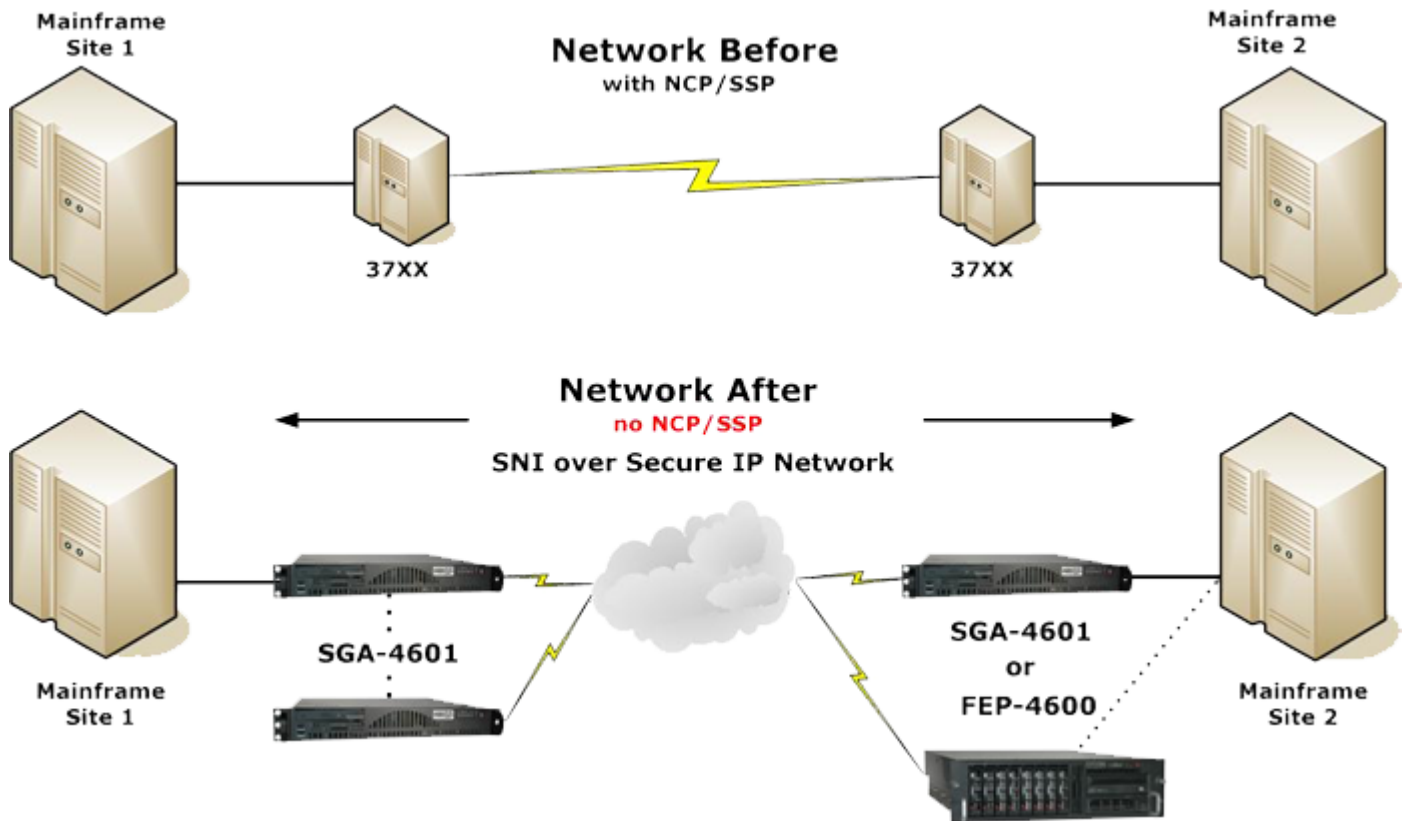
Simple/Flexible configuration and monitoring

The SGA-4601 is configured and managed using any standard browser. Additional management support can be provided by Visara's eManager product.

The SGA-4601 is equipped with a CD-RW drive which allows for full system backups. Operational software upgrades can be installed using the CD-RW drive, USB drive or loaded directly over the LAN/WAN using FTP.

The SGA-4601 comes complete with all operating software, a full one year warranty, and a variety of available maintenance programs to assure reliable long-term service.

Typical Network Application



HOST SOFTWARE REQUIREMENTS

Operating System z/OS, OS/390, VSE/ESA, MVS, VM,
z/VM, z/VSE, TPF, and z/TPF

PHYSICAL SPECIFICATIONS

Base Chassis 1U 19" Rack mount
Processor 2.8+ GHz Intel Pentium
RAM 2GB DDR RAM
Mounting 19" rack or table top
AC Power 115/220V 50/60Hz

WARRANTY

Limited Standard 1 Year On-Site 9/5 (U.S.A)